



# CHRONOS

## trapezoidal sheet metal short rails



- ▶ Time-efficient and easy installation thanks to simple system design
- ▶ Flexibility thanks to different profil lengths and universal hole pattern
- ▶ Installation depending on the module orientation directly on or traverse to the high beading
- ▶ Chipless installation

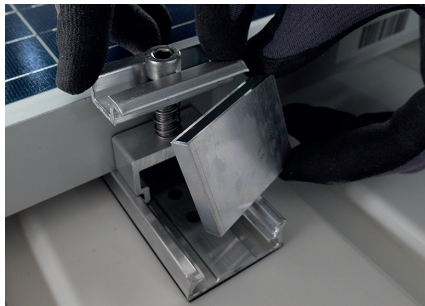


## System design

The assembly of the CHRONOS trapezoidal sheet metal mounting system is quick and cost effective feasible due to a simple design as well as its varied use.



UV- and ozone resistant, one-sided adhesive EPDM-seals ensures the sealing between trapezoidal sheet and short rail (sr). These are fastened under non-cutting processing using self-tapping thin sheet metal screws. The modules are fastened with pre-assembled CHRONOS middle clamp-sets which can easily clicked into the rail.



Module fixing: middle clamp-set + compensation profile



Optional: middle clamp-set with grounding plate

## Technical data

	CHRONOS 120 mm sr	CHRONOS 267 mm sr	CHRONOS 393 mm sr
Application	all trapezoidal sheet roofs: min. thickness steel 0,5 mm; min. thickness aluminium 0,6 mm min. width of the high bead 15 mm		
Attachment on the roof	screwing by means of thin metal screws approved by the building authorities; reduced water wetting of the connecting elements thanks to internal roof fastening		
Module orientation	horizontal, parallel to the roof	portrait, parallel to the roof	
High bead distance	—	87 - 207 mm	213 - 333 mm
Assembly of short rails	in the run of tra, metal sheet	traverse to the run of the trapezoidal metal sheet	
Module above high sick	16,6 mm		
Module fixing	click-in of the pre-assembled CHRONOS middle clamp-set (for all framed modules from 29-51 mm frame height); attachment on the long side of the module		
Static	project specific calculation of the wind suction		
System extension	CHRONOS sr as the first profile layer for Triton or special eleva2ons on trap. sheet metal		
Weight without module	approx. 0,20 kg/m <sup>2</sup>	approx. 0,31 kg/m <sup>2</sup>	approx. 0,36 kg/m <sup>2</sup>
Optional	module grounding by clamping of the module		
Materials	aluminium EN AW 6063 T66, mill-finished; stainless steel A2-70/bimetall; EPDM		

T.Werk GmbH

Greisbacherstraße 6 · 89331 Burgau · Tel. +49 8283 997 904-0 · Fax: +49 8283 997 904-299

info@t-werk.eu · www.t-werk.eu

